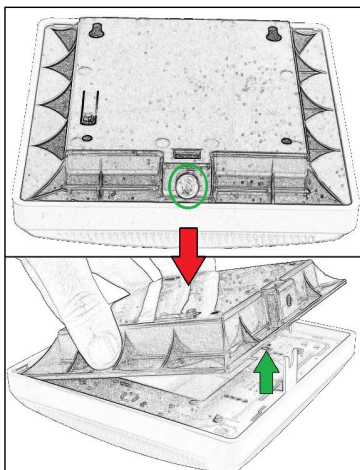


# QUICK INSTALLATION GUIDE

## Radon / Temperature/ Humidity/ Pressure

### Recommended mounting instructions:

- Mount on a solid wall
- Place the sensor 160-180cm above floor

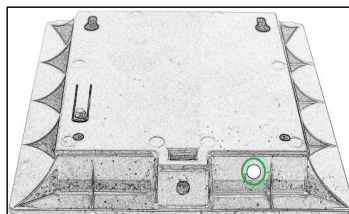


### Step 1a:

Unscrew and remove the screw at the bottom of the device.

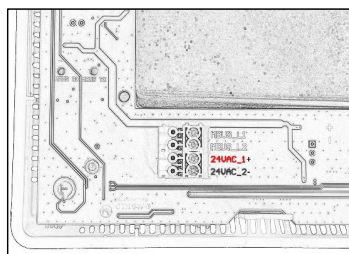
### Step 1b:

Lift the bottom part of the back (black) plastic piece as shown in the image.



### Step 3:

Thread the power cable through the marked hole on the back (black) plastic piece.

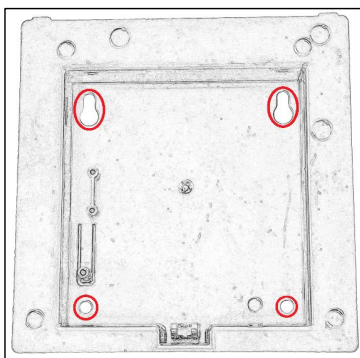


### Step 4:

Mount the cables as shown in the picture.

- Positive side to input called **24VAC\_1**
- Negative side to input **24VAC\_2**

**Note:** It is recommended that power is OFF during this step.

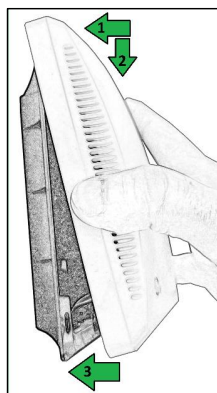


### Step 2:

Mark on the wall where the device is going to be mounted by using the holes on the picture.

Mount the back (black) piece by using screws.

**Note:** Make sure it's mounted like the in picture and not any other orientation.



### Step 5:

Attach the front (white) plastic piece in reverse compared to step 1. Mount the top part of the front first according to arrow number 1 and number 2 and then lower the bottom part.

Mount the screw at the bottom and tighten.

# QUICK INSTALLATION GUIDE

## Radon / Temperature/ Humidity/ Pressure



### Step 6:

Power on the device.

At startup, the LED on the front will show RED → ORANGE → GREEN → OFF. After turning off, a short beep will be heard.

If startup and initialization is successful, the device will blink GREEN 20 times.

The installation is now complete!

### Indications and behavior

When there is a state change, e.g., radon level goes from OK to WARNING, the device will indicate this change by blinking and beeping, see flow chart on the right side.

For device LAN-WMBUS-Q-R and LAN-WMBUS-Q-RC, the indications are based on the radon level while LAN-WMBUS-Q-C is based on the CO2 level.

CO2 level for ok: 0-999 ppm

CO2 level for warning: 1000-1999 ppm

CO2 level for alarm: 2000+ ppm

CO2 hysteresis: 200 ppm

Radon level for ok: 0-99 Bq/m<sup>3</sup>

Radon level for warning: 100-199 Bq/m<sup>3</sup>

Radon level for alarm: 200+ Bq/m<sup>3</sup>

Radon level hysteresis: 50 Bq/m<sup>3</sup>

